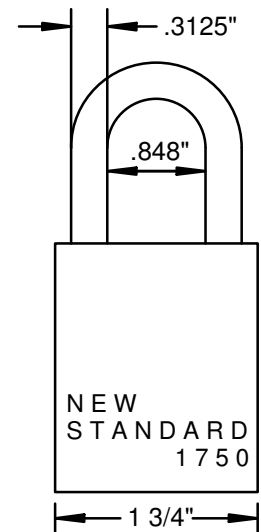
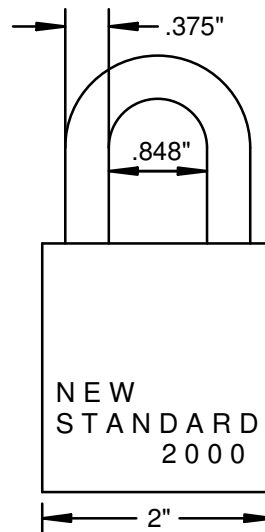
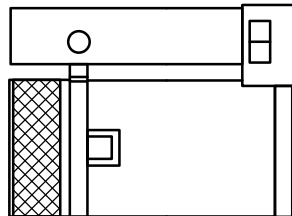
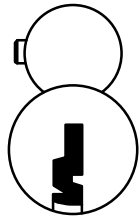


NEW STANDARD® MFG. CO

ADAPTABLE PADLOCK SYSTEM™

FOR SCHLAGE LARGE
FORMAT INTERCHANGEABLE
CORE CYLINDERS



ACCEPTS ALL SCHLAGE LARGE
FORMAT
INTERCHANGEABLE CORE
CYLINDERS INCLUDING PRIMUS
AND EVEREST

COMPETITIVELY PRICED

PATENTED

MADE IN U. S. A.

SYSTEM WIDE FEATURES
COMMON TO ALL MODELS

INVENTORS OF THE DUAL
FUNCTION PADLOCK
OUR NON-KEY RETAINING
CONVERTIBLE (NKR-CV) FUNCTION
PADLOCK'S PATENTED DESIGN
ALLOWS LOCKSMITH TO CHOOSE
PADLOCK FUNCTION; KR (KEY
RETAINING) OR NKR (NON-KEY
RETAINING) AT TIME OF CYLINDER
INSTALLATION. STOCK ONE MODEL
FOR EITHER FUNCTION REQUEST,
CUT INVENTORY IN HALF!
ECONOMICAL KR (KEY RETAINING)
ONLY MODEL ALSO AVAILABLE.

ELLIPTICAL SOLID BRASS BODY

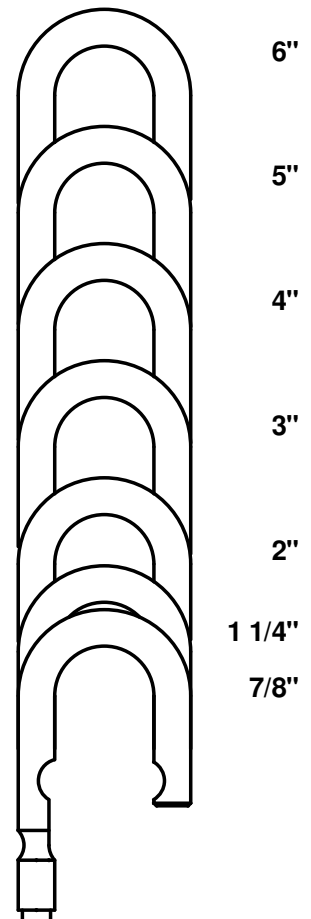
DOUBLE BALL LOCKING DESIGN

1 3/4" (MODEL 1750) OR 2" (MODEL
2000) BODY WIDTHS

FURNISHED: LESS CYLINDER

ALL PARTS ARE CORROSION
RESISTANT STAINLESS STEEL OR
BRASS AND ARE COMPLETELY
INTERCHANGEABLE.

3 SHACKLE MATERIALS:
HARDENED STEEL, STAINLESS
STEEL, AND BRASS, 7 BASIC
SHACKLE LENGTHS, 8" AND 12"
AVAILABLE IN STAINLESS STEEL.
(1 1/4" IS STANDARD)



DISTRIBUTED BY:

NEW STANDARD
MANUFACTURING COMPANY
7005 SPEEDWAY
BLVD., BLDG. F111
LAS VEGAS, NEVADA 89115
702-649-0599 FAX 702-649-0544
e-mail:
newstandardmfg@mindspring.com

PRICE LIST: NEW STANDARD PADLOCKS FOR SCHLAGE LARGE FORMAT INTERCHANGEABLE CORE CYLINDERS

September 1, 2011

PADLOCKS WITH HARDENED STEEL SHACKLES

| DESCRIPTION | 7/8" | 1 1/4" | 2" | 3" | 4" | 5" | 6" |
|--------------------------|----------|----------|----------|----------|----------|----------|----------|
| 1750 KR | 189-107 | 189-112 | 189-120 | 189-130 | 189-140 | 189-150 | 189-160 |
| KR FUNCTION ONLY | \$ 56.73 | \$ 56.73 | \$ 58.33 | \$ 61.25 | \$ 63.55 | \$ 65.55 | \$ 67.87 |
| 2000 KR | 214-107 | 214-112 | 214-120 | 214-130 | 214-140 | 214-150 | 214-160 |
| KR FUNCTION ONLY | \$ 67.74 | \$ 67.74 | \$ 69.68 | \$ 73.68 | \$ 76.18 | \$ 79.46 | \$ 81.98 |
| 1750 CONVERTIBLE | 389-107 | 389-112 | 389-120 | 389-130 | 389-140 | 389-150 | 389-160 |
| DUAL FUNCTION: KR OR NKR | \$ 57.79 | \$ 57.79 | \$ 59.39 | \$ 62.31 | \$ 64.61 | \$ 66.61 | \$ 68.93 |
| 2000 CONVERTIBLE | 414-107 | 414-112 | 414-120 | 414-130 | 414-140 | 414-150 | 414-160 |
| DUAL FUNCTION: KR OR NKR | \$ 68.80 | \$ 68.80 | \$ 70.74 | \$ 74.74 | \$ 77.24 | \$ 80.52 | \$ 83.04 |

PADLOCKS WITH STAINLESS STEEL SHACKLES

| DESCRIPTION | 7/8" | 1 1/4" | 2" | 3" | 4" | 5" | 6" |
|--------------------------|----------|----------|----------|----------|----------|----------|----------|
| 1750 KR | 189-007 | 189-012 | 189-020 | 189-030 | 189-040 | 189-050 | 189-060 |
| KR FUNCTION ONLY | \$ 56.73 | \$ 56.73 | \$ 58.33 | \$ 61.25 | \$ 63.55 | \$ 65.55 | \$ 67.87 |
| 2000 KR | 214-007 | 214-012 | 214-020 | 214-030 | 214-040 | 214-050 | 214-060 |
| KR FUNCTION ONLY | \$ 67.74 | \$ 67.74 | \$ 69.68 | \$ 73.68 | \$ 76.18 | \$ 79.46 | \$ 81.98 |
| 1750 CONVERTIBLE | 389-007 | 389-012 | 389-020 | 389-030 | 389-040 | 389-050 | 389-060 |
| DUAL FUNCTION: KR OR NKR | \$ 57.79 | \$ 57.79 | \$ 59.39 | \$ 62.31 | \$ 64.61 | \$ 66.61 | \$ 68.93 |
| 2000 CONVERTIBLE | 414-007 | 414-012 | 414-020 | 414-030 | 414-040 | 414-050 | 414-060 |
| DUAL FUNCTION: KR OR NKR | \$ 68.80 | \$ 68.80 | \$ 70.74 | \$ 74.74 | \$ 77.24 | \$ 80.52 | \$ 83.04 |

PADLOCKS WITH BRASS SHACKLES

| DESCRIPTION | 7/8" | 1 1/4" | 2" | 3" | 4" | 5" | 6" |
|--------------------------|----------|----------|----------|----------|----------|----------|----------|
| 1750 KR | 189-207 | 189-212 | 189-220 | 189-230 | 189-240 | 189-250 | 189-260 |
| KR FUNCTION ONLY | \$ 56.73 | \$ 56.73 | \$ 58.33 | \$ 61.25 | \$ 63.55 | \$ 65.55 | \$ 67.87 |
| 2000 KR | 214-207 | 214-212 | 214-220 | 214-230 | 214-240 | 214-250 | 214-260 |
| KR FUNCTION ONLY | \$ 67.74 | \$ 67.74 | \$ 69.68 | \$ 73.68 | \$ 76.18 | \$ 79.46 | \$ 81.98 |
| 1750 CONVERTIBLE | 389-207 | 389-212 | 389-220 | 389-230 | 389-240 | 389-250 | 389-260 |
| DUAL FUNCTION: KR OR NKR | \$ 57.79 | \$ 57.79 | \$ 59.39 | \$ 62.31 | \$ 64.61 | \$ 66.61 | \$ 68.93 |
| 2000 CONVERTIBLE | 414-207 | 414-212 | 414-220 | 414-230 | 414-240 | 414-250 | 414-260 |
| DUAL FUNCTION: KR OR NKR | \$ 68.80 | \$ 68.80 | \$ 70.74 | \$ 74.74 | \$ 77.24 | \$ 80.52 | \$ 83.04 |

PADLOCK BODIES ONLY, COMPLETE, LESS SHACKLE

| DESCRIPTION | |
|--------------------------|----------|
| 1750 KR | 189-000 |
| KR FUNCTION ONLY | \$ 49.07 |
| 2000 KR | 214-000 |
| KR FUNCTION ONLY | \$ 57.52 |
| 1750 CONVERTIBLE | 389-000 |
| DUAL FUNCTION: KR OR NKR | \$ 50.13 |
| 2000 CONVERTIBLE | 414-000 |
| DUAL FUNCTION: KR OR NKR | \$ 58.58 |

SHACKLES ONLY

| DESCRIPTION | 7/8" | 1 1/4" | 2" | 3" | 4" | 5" | 6" | 8" | 12" |
|-----------------|----------|----------|----------|----------|----------|----------|----------|----------|----------|
| FOR MODEL 1750 | 917-107 | 917-112 | 917-120 | 917-130 | 917-140 | 917-150 | 917-160 | | |
| HARDENED STEEL | \$ 7.66 | \$ 7.66 | \$ 9.26 | \$ 12.18 | \$ 14.48 | \$ 16.48 | \$ 18.80 | | |
| STAINLESS STEEL | \$ 7.66 | \$ 7.66 | \$ 9.26 | \$ 12.18 | \$ 14.48 | \$ 16.48 | \$ 18.80 | \$ 28.96 | \$ 37.60 |
| BRASS | \$ 7.66 | \$ 7.66 | \$ 9.26 | \$ 12.18 | \$ 14.48 | \$ 16.48 | \$ 18.80 | | |
| FOR MODEL 2000 | 920-107 | 920-112 | 920-120 | 920-130 | 920-140 | 920-150 | 920-160 | | |
| HARDENED STEEL | \$ 10.22 | \$ 10.22 | \$ 12.16 | \$ 16.16 | \$ 18.66 | \$ 21.94 | \$ 24.46 | | |
| STAINLESS STEEL | \$ 10.22 | \$ 10.22 | \$ 12.16 | \$ 16.16 | \$ 18.66 | \$ 21.94 | \$ 24.46 | \$ 37.36 | \$ 48.90 |
| BRASS | \$ 10.22 | \$ 10.22 | \$ 12.16 | \$ 16.16 | \$ 18.66 | \$ 21.94 | \$ 24.46 | | |